







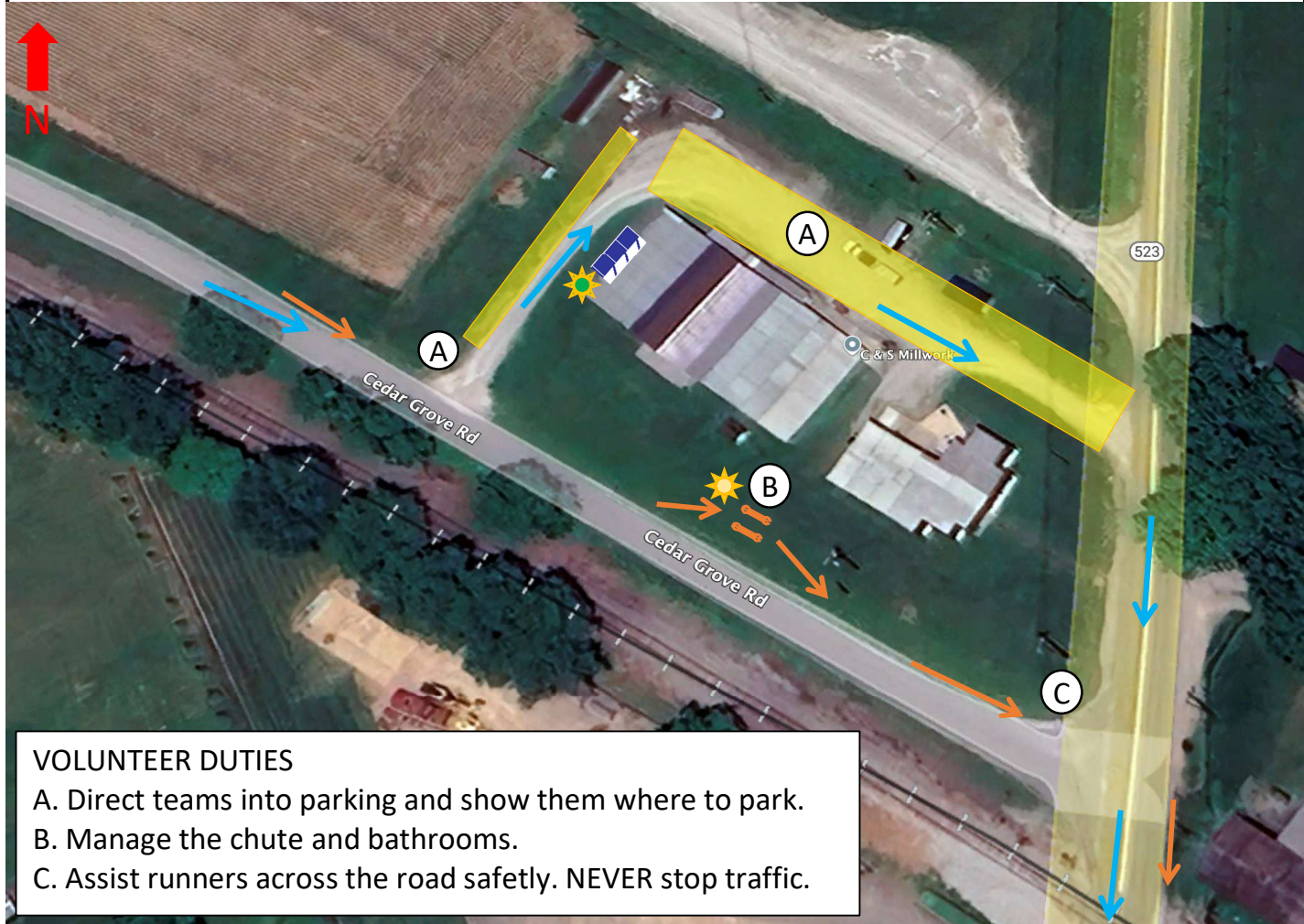


Exchange 1 Location		Venue Contact		Nighttime Hours	
C&S Millwork, 1015 Deatsville Rd, Coxs Creek, KY 40013		TEXT ONLY: 661-RAGNAR-1 (661-724-6271)		6:15 pm - 8:00 am	
Runner Times		Parking		Leg Distances	
First Runner Allowed	5:15 AM	Parking Capacity	50	Incoming leg distance	7.4
Last Runner Allowed	1:00 PM	Parking Need	71	Outgoing leg distance	2.2

EXCHANGE DETAIL:

	Runner Path		Volunteer		Parking
	Van Path		Toilets		Chute
	Construction Light		Milwaukee Light Tower		



VOLUNTEER DUTIES

- A. Direct teams into parking and show them where to park.
- B. Manage the chute and bathrooms.
- C. Assist runners across the road safely. NEVER stop traffic.

SAFETY/PROPERTY CONCERNS	Be respectful of locals and keep the exchange and parking areas tidy throughout the event.
CHUTE PLACEMENT	In the grass, south of the buildings. Watching out for the cement pillar and telephone wires.
PARKING INSTRUCTIONS	Tight parking lot. Begin with a good parking flow from the start.
TOILETS	Next to the west side of the building, doors facing the building and not the driveway.